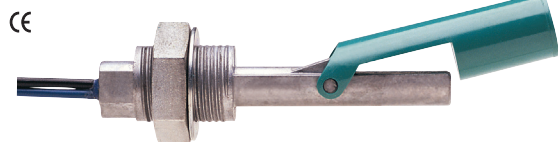


## Small Size - Alloys

### LS-7 Series - Compact Alloy and Alloy/Plastics Side Mounts

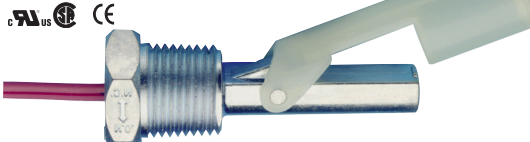
Built for durability, our LS-7 Series switches utilize stainless steel, or zinc bodies. Ideal for any small tank or vessel destined for a rugged environment. All-stainless steel material of construction of Types 9 and 11 is generally recognized as safe with FDA for food contact regulations.

Type 6 – External Mounting



Polysulfone float. Zinc alloy body with polypropylene or nylon float. SAE Mounting.

Type 8 – External Mounting



Zinc alloy body with nylon or polypropylene float.

Type 9 – External Mounting



316 Stainless Steel body with 316 SS, nylon or polypropylene float.

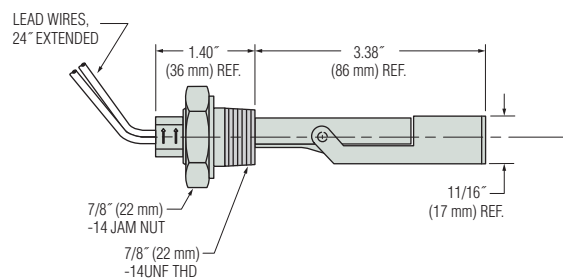
Type 11 – Internal Mounting



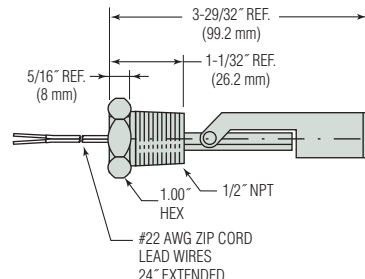
316 Stainless Steel body with 316 SS float.

### Dimensions

Type 6



Type 8



### Common Specifications

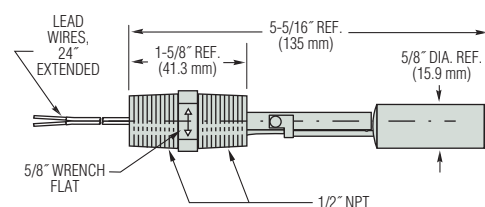
**Switch Rating\*:** SPST, 20VA

**Lead Wire Gauge:** No. 22 AWG

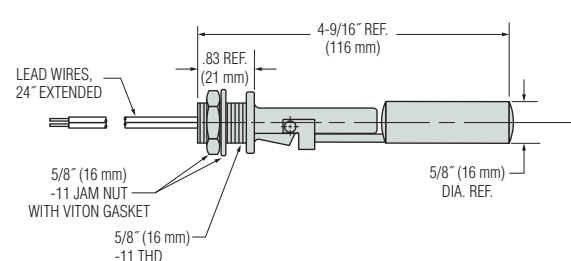
**Mounting Attitude:** Horizontal.

\*See "Electrical Data" on Page X-5 for more information.

Type 9

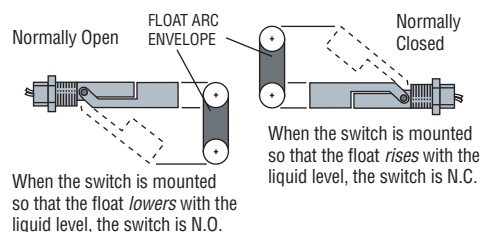


Type 11



## Switch Operation

Depending on the mounting position, the float on these switches can either rise or lower with the liquid level. By rotating the switch 180°, the switch operation can be Normally Open or Normally Closed.



How To Order – Select Part Number based on specifications required.

Mounting Type	Materials			Min. Liquid Sp. Gr.	Operating Temperature	Operating Pressure, Max.	Float Arc Envelope	Part Number
	Stem and Mounting	Float	Lead Wire Jacket					
6	Zinc Alloy*	Nylon	TFE <sup>†</sup>	.65	-40°F to +250°F (-40°C to +121°C)	100 psi @ 70°F	1.36	155660
		Polypropylene		.75	-40°F to +225°F (-40°C to +107°C)	150 psi @ 70°F	1.36	179870
8	Zinc Alloy*	Nylon	TFE <sup>†</sup>	.65	-40°F to +250°F (-40°C to +121°C)	100 psi @ 70°F	1.40	160950
		Polypropylene		.55	-40°F to +225°F (-40°C to +107°C)	150 psi @ 70°F	1.40	162795
9	316 Stainless Steel	316 S.S.	TFE <sup>†</sup>	.80	-40°F to +300°F (-40°C to +149°C)	300 psi @ 70°F	1.43	164870 ⚡
		Nylon		.65	-40°F to +250°F (-40°C to +121°C)	100 psi @ 70°F	1.40	164850
		Polypropylene		.55	-40°F to +225°F (-40°C to +107°C)	100 psi @ 70°F	1.40	164860
11	316 Stainless Steel		Teflon®	.80	-40°F to +300°F (-40°C to +149°C)	300 psi @ 70°F	1.65	179445

<sup>†</sup>Thermoplastic Elastomer Zip Cord.

⚡ – Stock Items.

### \*Zinc Alloy Material Note:

When mounted in certain cathodic metals, including stainless steel, and used in water-based liquids, galvanic corrosion may occur. Consult factory for information.